



**FACULTY OF ECONOMICS AND ADMINISTRATIVE
SCIENCES**

2023-2024 FALL SEMESTER

SECOND LIFE GUIDE

Course Instructors: Assoc. Prof. Dr. Murat Gülmez

Course Assistants: Res. Asst. Ersin İnal

Res. Asst. Gülay Güler

TABLE OF CONTENTS

1. WHAT IS SECOND LIFE?	3
2. HOW TO JOIN?	3
2.1. Creating an Account	3
2.2. Toolbars and Menu	5
2.3. Adding as a Friend	10
3. COMMUNICATION.....	11
4. OUR VIRTUAL CAMPUS	12

REPUBLIC OF TURKEY
ÇAĞ UNIVERSITY
FACULTY OF ECONOMICS AND ADMINISTRATIVE SCIENCES
2022-2023 SPRING SEMESTER

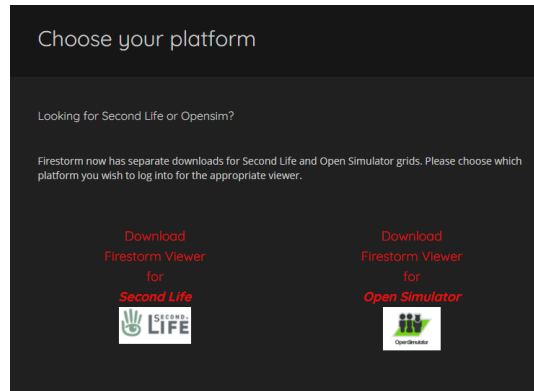
1. WHAT IS SECOND LIFE?

Second Life is an internet-based virtual world that was put into service in 2003 by Linden Research. In Second Life, the person starts the game by creating an avatar for himself. It can decide on all the features of the avatar it will create. For example, everything such as hair colour, height, weight, profession can be changed and adjusted depending on the user's request.

2. HOW TO JOIN?

We will use the firestorm viewer to enter the Second Life. You can download Firestorm Viewer for Second Life from the link below by selecting the download option.

<https://www.firestormviewer.org/choose-your-platform/>

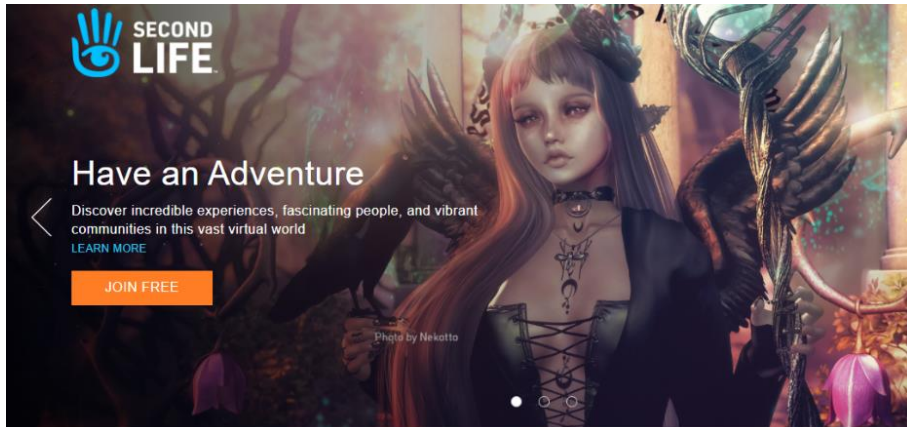


2.1. Creating an Account

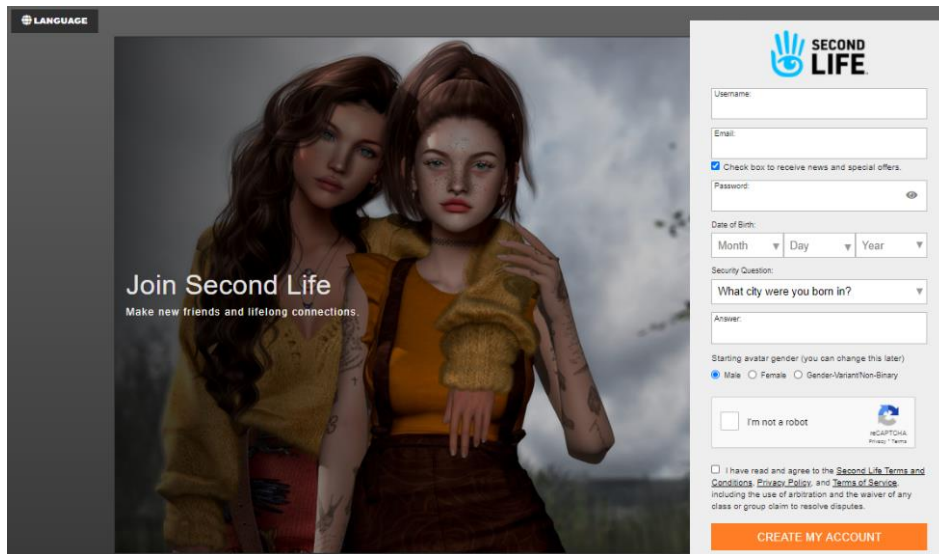
1. Click on the link below to create your account.

<https://secondlife.com/>

When you enter to official website of the Second Life you will see this screen.



2. Click the **join free** button. And then you will see screen below.



You can create your account from here.

Note: Be careful when selecting your username. Because you cannot change this username later.

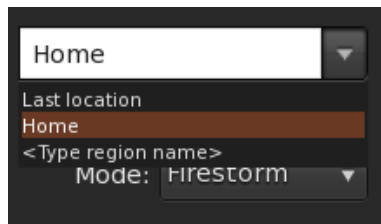
3. After creating your account and downloading firestorm viewer, login to firestorm.

You will see this screen:



Write your username and password to enter the Second Life.

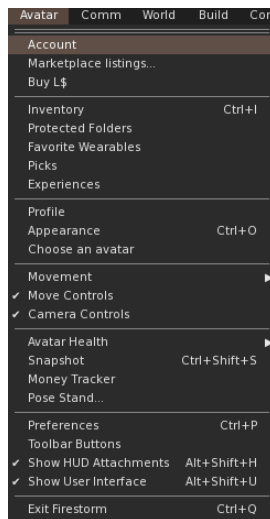
Also you can select the your place before you enter the Second Life



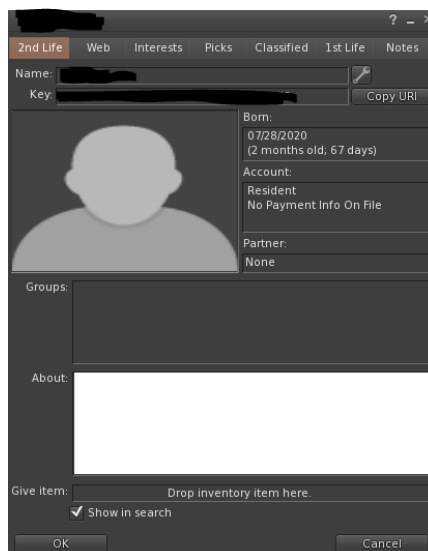
2.2. Toolbars and Menu

After you entered the SL, you will see these menu and toolbars.

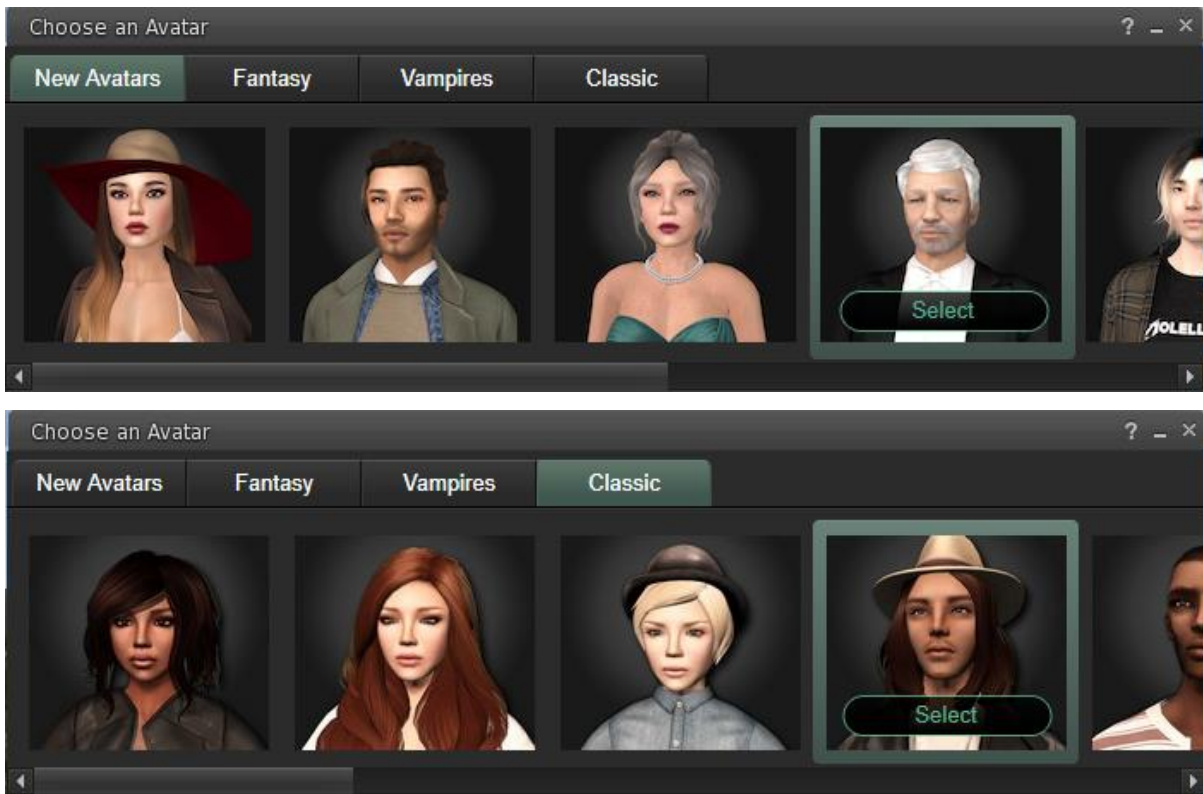
First of all, you can select your avatar and appearance from the 'Avatar' menu. It is on the upper left corner.



Here you can write about yourself by choosing the profile menu.



You can choose your avatar by selecting the 'Choose an Avatar'. You will see that screen:



You will use the arrow keys to move. You can walk, run or fly in the SL. But some places do not allow to fly. You can see from the top line what you can do and cannot.



For example this place do not allow to build something. You can see this from the box picture.

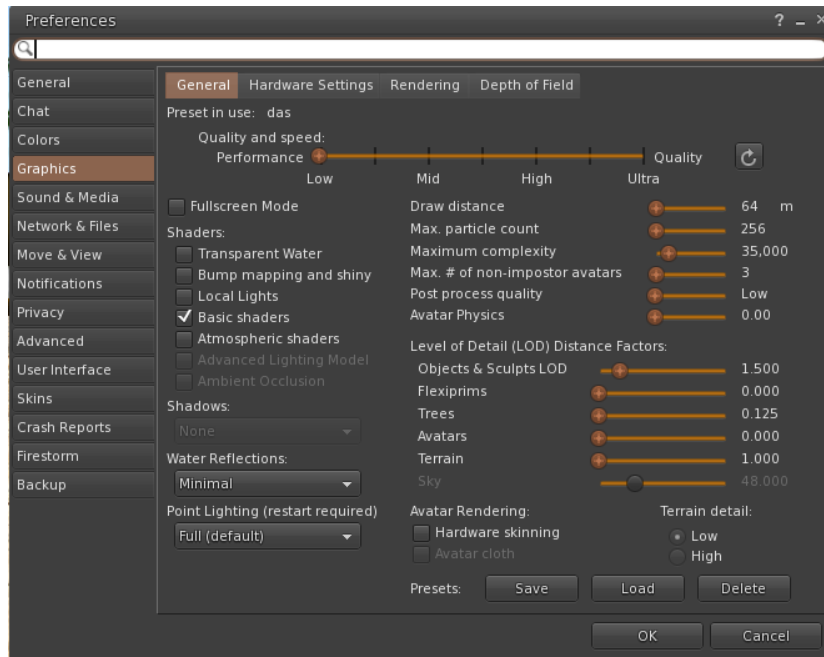


This is the movement control toolbar. You can see this lower left corner of the screen when you entered the SL. You can choose to walk, run, or fly from here.

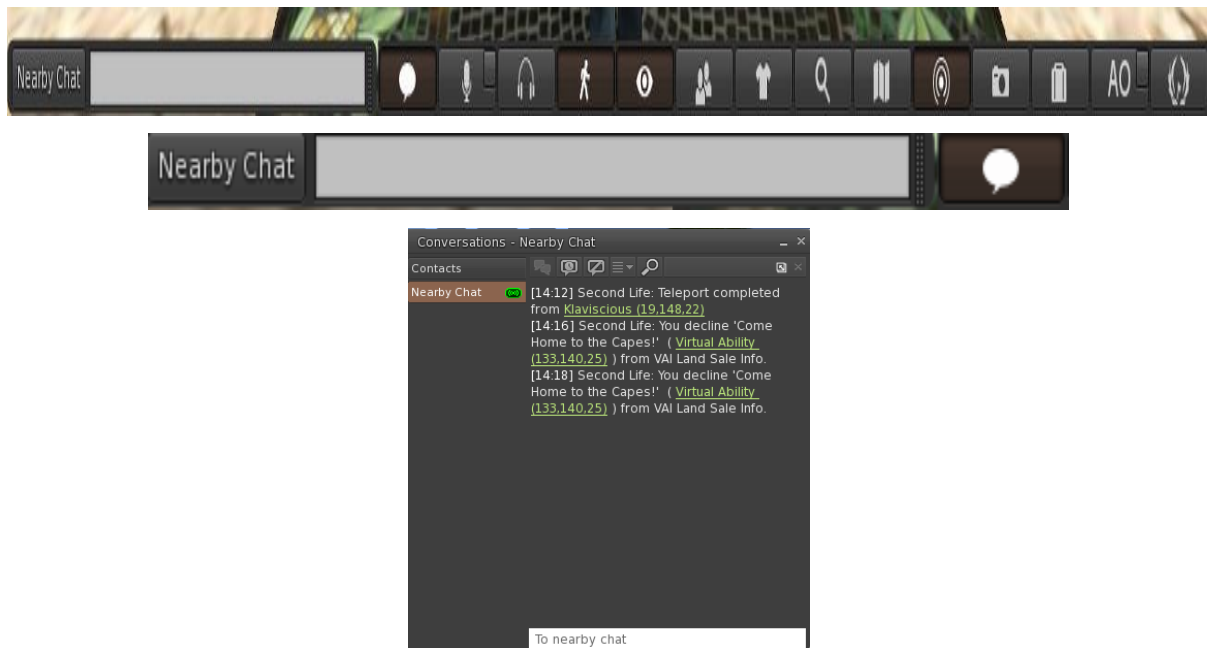
You must also adjust your graphics settings. Too high settings can cause the game to run slowly. Therefore, it is recommended that you keep these settings low.

From the 'Avatar' menu, choose 'Preferences' option. Also, you can do your other settings from here.

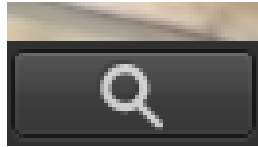
You will see this screen:



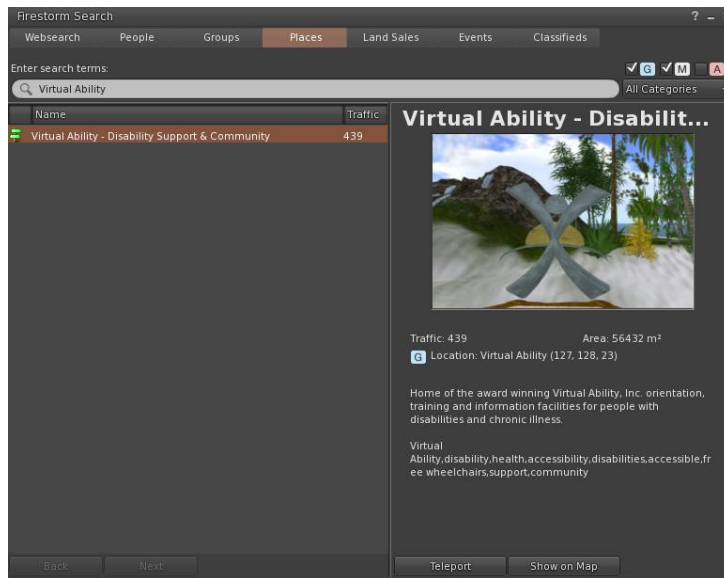
Picture at the below is the bottom menu. You can see chat, microphone settings, teleport, snapshot menus from here.



This is the chat menu you can write here to chat with other people in the region.



This magnifying glass shape is also important. You can use this toolbar to teleport from place to place. If you click this, you will see that screen:

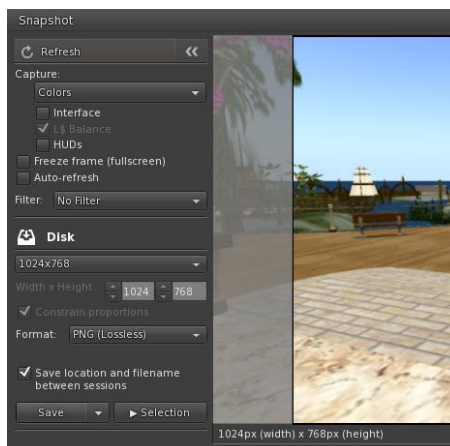


You can write where you want to go here. And then click the ‘teleport’ option. Additionally, if you can select ‘people’ toolbar from here, you can find the people by writing their usernames.

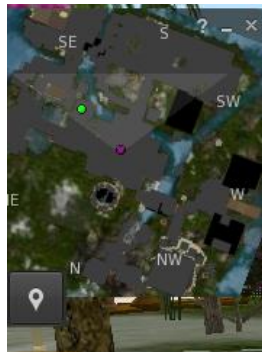
You can take pictures in the SL. From the bottom menu, you will see that picture:



After you click this, you will see that screen:



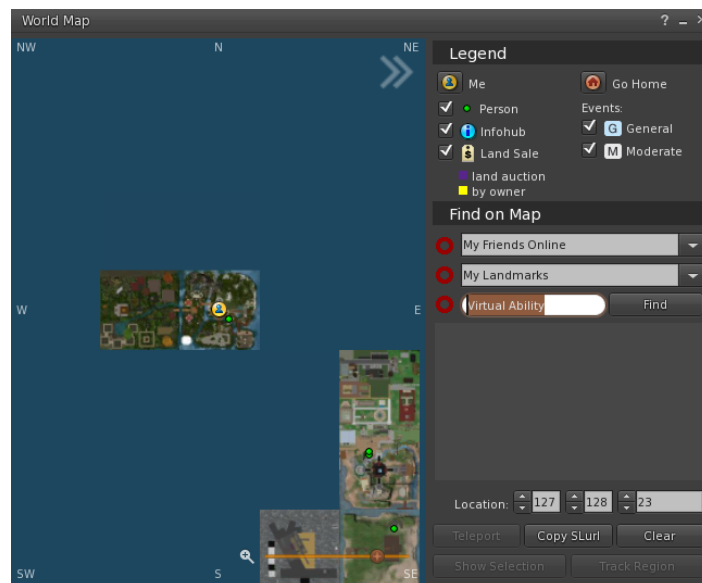
You can save the photo you have taken to your computer by clicking save button and then selecting the file where you want to save.



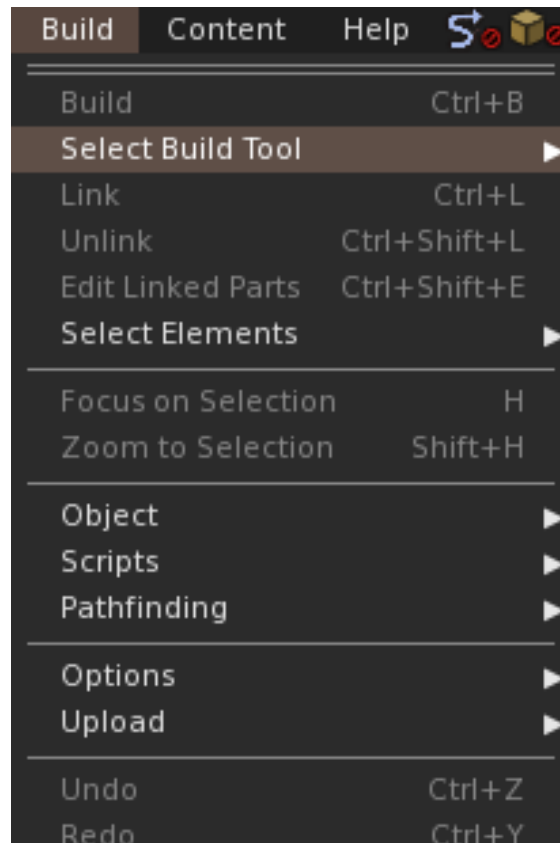
This is the map that show your location in SL.



This is also map toolbar that is at the bottom menu. You can see your location details by clicking this option.



If you want to build something in the SL you should use the 'Build' menu that is on the top of the screen. Select 'Build' option from here. But if your location does not permit for building, you cannot use this menu.



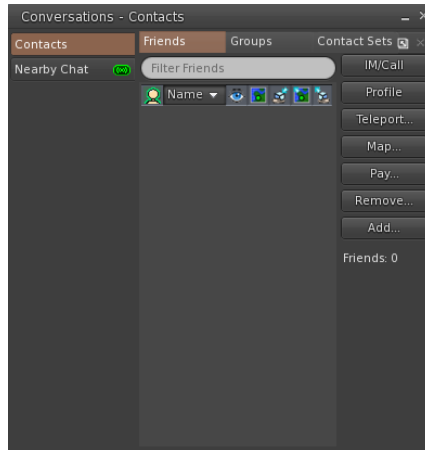
2.3. Adding as a Friend

You can add as a friend to keep in touch within SL. For this, you must follow the steps below.

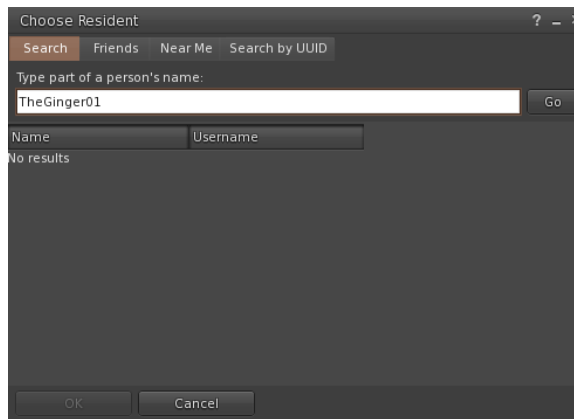
1. Click on the 'comm' menu from the top menu. You will see that picture:



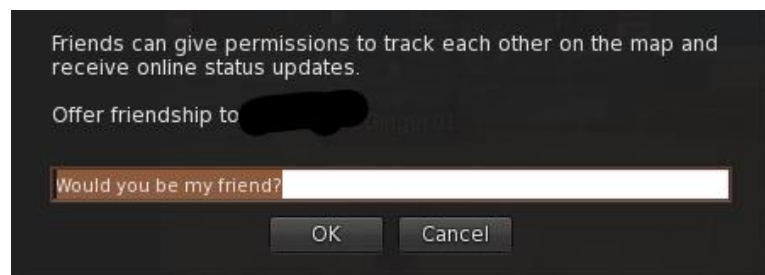
2. Click on 'contacts' from here. You will see that screen:



3. Click on the 'add' option on the screen above and enter the username of the avatar that you want to add on the 'Type part of a person's name' section and click 'go'.



4. After this process, the avatar of the person you are looking for will appear under the 'name' and 'username' lines. Click 'ok' from here.
5. You will see that screen. Click 'ok' to send the friend request.



3. COMMUNICATION

For communication in SL, our usernames are:

Murat Gülmez: Magua Theriac

Gülay Güler: Gigi851

Ersin İnal: TheGinger01

Note: You should add the instructors to access our online campus. After you add, the instructor will add you to the group and will permit you to access the campus.

Our virtual campus link is written below:

<https://maps.secondlife.com/secondlife/Cag%20University%20Campus/94/238/25>

4. OUR VIRTUAL CAMPUS

Below you can see the photos of our virtual campus.



You can communicate with us if you have any problems via e-mail:

ersininal@cag.edu.tr

gulayguler@cag.edu.tr

mgulmez@cag.edu.tr